

## Pins with circlip groove suitable for clevis

### Item description/product images



### Description

#### Material:

Steel 1.0718 or 1.4305 stainless steel

#### Version:

Electro zinc-plated steel.

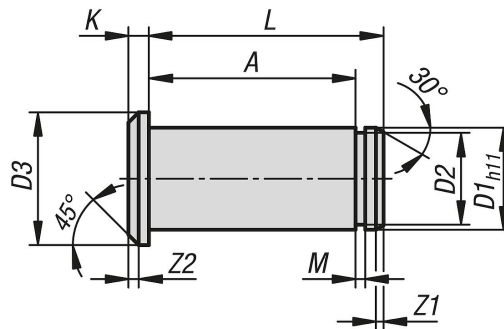
Bright stainless steel.

#### Note:

Pin with groove, suitable for DIN 71752 clevis. Secured with a DIN 6799 E-type circlip (alternatively a KL or SL clip).

When combined with a suitable clevis and tang, forms a fully functional clevis joint.

### Drawings



### Overview of items

#### Pins with circlip groove, suitable for clevis

Order No.	Main material	D1	D2	D3	A	K	L	M	Z1	Z2
K1454.004085	steel	4	3,2	6	8,5	1	10,5	0,64	0,5	0,5
K1454.005105	steel	5	4	8	10,5	1,5	13	0,74	0,5	0,5
K1454.006125	steel	6	5	9	12,5	1,5	15,5	0,74	1	0,5
K1454.008165	steel	8	6	12	16,5	2	20	0,94	0,5	1
K1454.010205	steel	10	8	14	20,5	2	25	1,05	1	1
K1454.012245	steel	12	9	17	24,5	3	30	1,15	1	1,5
K1454.014275	steel	14	10	19	27,5	3	33	1,25	1,25	1,5
K1454.016325	steel	16	12	21	32,5	3	38,5	1,35	1,5	1,5
K1454.020405	steel	20	17,5	26	40,5	4	46	1,9	1,5	2
K1454.025505	steel	25	18	32	50,5	5	57	1,9	1,5	2
K1454.104085	stainless steel	4	3,2	6	8,5	1	10,5	0,64	0,5	0,5
K1454.105105	stainless steel	5	4	8	10,5	1,5	13	0,74	0,5	0,5
K1454.106125	stainless steel	6	5	9	12,5	1,5	15,5	0,74	1	0,5
K1454.108165	stainless steel	8	6	12	16,5	2	20	0,94	0,5	1
K1454.110205	stainless steel	10	8	14	20,5	2	25	1,05	1	1
K1454.112245	stainless steel	12	9	17	24,5	3	30	1,15	1	1,5
K1454.114275	stainless steel	14	10	19	27,5	3	33	1,25	1,25	1,5
K1454.116325	stainless steel	16	12	21	32,5	3	38,5	1,35	1,5	1,5
K1454.120405	stainless steel	20	17,5	26	40,5	4	46	1,9	1,5	2