

# Knurled nuts steel and stainless steel, DIN 6303

## Item description/product images

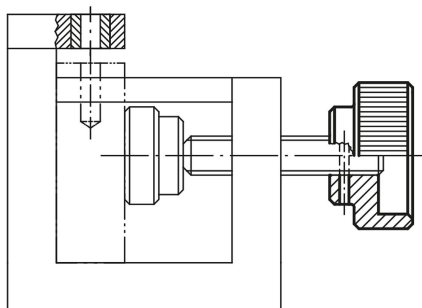


### Description

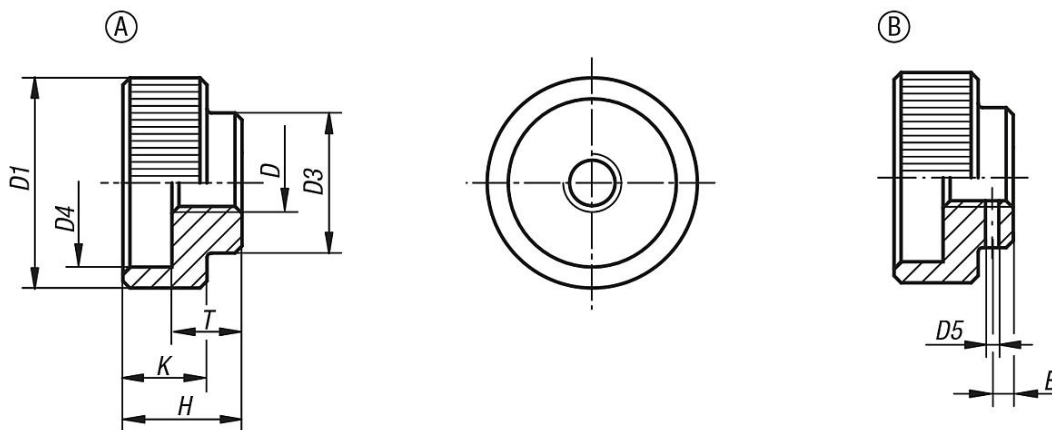
**Material:**  
 Steel 1.0718.  
 Stainless steel 1.4305.

**Version:**  
 Steel, black oxidised.  
 Stainless steel, bright.

**Drawing reference:**  
 Form A: without pin hole  
 Form B: with pin hole  
 - Drill through and ream pin hole during assembly.



## Drawings



## Overview of items

### Knurled nuts, steel and stainless steel, DIN 6303

Order No.	Form	Main material	D	D1	D3	D4	D5 predrilled	E	H	K	T	suitable dowel pin ISO 2338
K0137.105	A	steel	M5	20	14	15	-	-	12	8	7	-
K0137.106	A	steel	M6	24	16	18	-	-	14	10	8	-
K0137.108	A	steel	M8	30	20	24	-	-	17	12	10	-
K0137.110	A	steel	M10	36	28	30	-	-	20	14	12	-
K0137.112	A	steel	M12	40	32	34	-	-	24	16	14	-
K0137.1052	A	stainless steel	M5	20	14	15	-	-	12	8	7	-
K0137.1062	A	stainless steel	M6	24	16	18	-	-	14	10	8	-
K0137.1082	A	stainless steel	M8	30	20	24	-	-	17	12	10	-

## Knurled nuts steel and stainless steel, DIN 6303

### Overview of items

Order No.	Form	Main material	D	D1	D3	D4	D5 predrilled	E	H	K	T	suitable dowel pin ISO 2338
K0137.1102	A	stainless steel	M10	36	28	30	-	-	20	14	12	-
K0137.1122	A	stainless steel	M12	40	32	34	-	-	24	16	14	-
K0137.205	B	steel	M5	20	14	15	1,4	2,5	12	8	7	1,5
K0137.206	B	steel	M6	24	16	18	1,4	2,5	14	10	8	1,5
K0137.208	B	steel	M8	30	20	24	1,9	3	17	12	10	2
K0137.210	B	steel	M10	36	28	30	2,9	4	20	14	12	3
K0137.212	B	steel	M12	40	32	34	3,9	4	24	16	14	4