

# Positioning pins cylindrical, ground

## Item description/product images

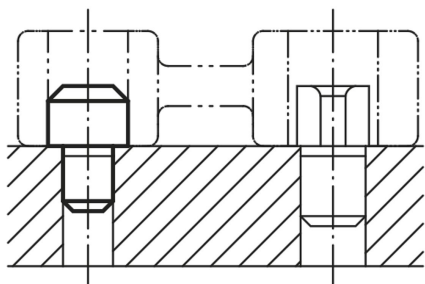


### Description

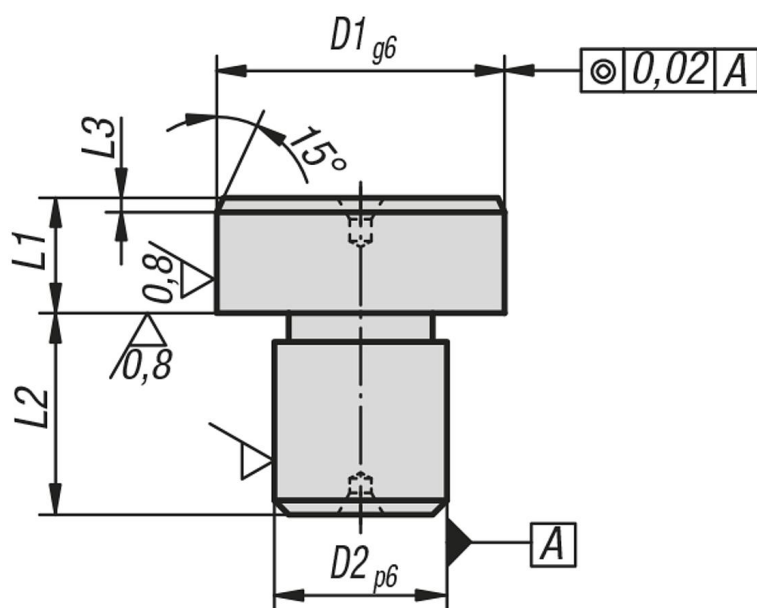
**Material:**  
Tool steel.

**Version:**  
Hardened and ground.

**Note:**  
Top face with centrebore.



## Drawings



## Overview of items

### Cylindrical positioning pins, ground

Order No.	D1	D2	L1	L2	L3
K0352.05	8	5	8	8	2
K0352.07	10	7	8	8	2
K0352.08	12	8	8	10	2
K0352.081	14	8	8	10	3
K0352.09	16	9	8	12	3
K0352.12	18	12	8	12	3
K0352.121	20	12	8	14	3

**Positioning pins cylindrical, ground****Overview of items**

Order No.	D1	D2	L1	L2	L3
K0352.14	22	14	8	14	3
K0352.16	25	16	8	16	3