

## Gateway for indexing plunger with status sensor

### Item description/product images



### Description

#### Material:

Housing lower part ABS.

Housing top part PC.

#### Version:

Housing lower part light grey.

Housing top part transparent.

#### Note:

The gateway receives the wireless signal from the indexing plunger with status sensor and converts it into a standard output signal.

When connected to a machine controller, the activation state of up to 6 indexing plungers can be processed. The number of indexing plungers can be increased at will by using additional Gateways.

#### Technical data:

Operating voltage: 24 V DC

Nominal current: 0.5 A

Signal input: 14x wireless via Bluetooth LE 4.2

Signal output: 14x digital, galvanically isolated relay outputs (signal level 24 V)

Temperature range: 0 - + 60°C (without condensation)

Rating: IP65

Housing fastening: can be screwed on directly

#### Application:

The gateway is required to integrate indexing plungers with status sensor into machines and plants. Thanks to the connection between the gateway and machine controller, the activation status of the indexing plunger can be displayed, checked and used for process control.

#### On request:

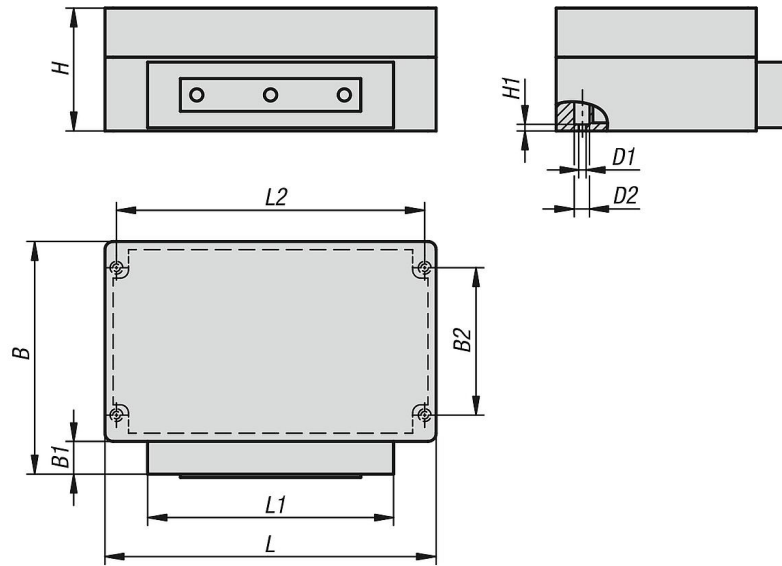
Further output signals, interfaces

#### Accessory:

Indexing plunger with status sensor K1495

**Gateway for indexing plunger with status sensor**

**Drawings**



**Overview of items**

**Gateway for indexing plunger with status sensor**

Order No.	Output signal	B	B1	B2	D1	D2	H	H1	L	L1	L2
K1494.01	Relais	142	20	90	4,5	7,75	75	4	202	150	188